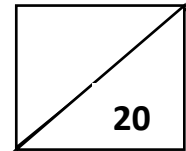


Primary 3 Science
Classification: Living and non-living things,
Plants & Process Skills
Revision 1



Section A: MCQ (10 x 1 mark = 10 marks)

Choose the correct answers and write the numbers in the bracket provided.

1) Study the characteristics of the four things shown below.

| Characteristics | Things | | | |
|-------------------|--------|---|---|---|
| | P | Q | R | S |
| Needs food | ✓ | ✓ | ✓ | |
| Able to reproduce | ✓ | ✓ | ✓ | |
| Has legs | ✓ | | ✓ | ✓ |

Which of the following is most likely **not** a living thing?

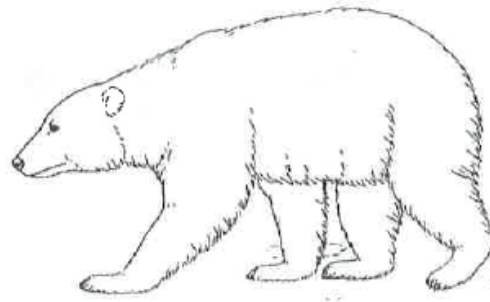
- (1) P
- (2) Q
- (3) R
- (4) S

()

2) Study the pictures shown below.



soft toy



polar bear

Which of the following statements correctly compares the soft toy and the polar bear?

- (1) Both can move by themselves.
- (2) Both need air, food and water to survive.
- (3) The polar bear can reproduce but the soft cannot reproduce.
- (4) The soft toy can respond to changes but the polar bear cannot respond to changes.

()

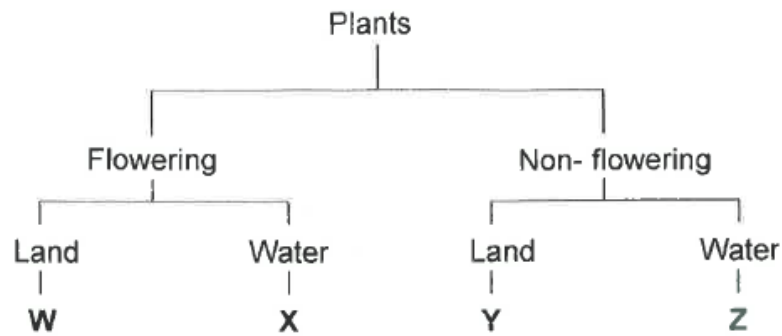
3) Which of the following do living things need to survive?

- A air
- B soil
- C food
- D water

- (1) A and B only
- (2) C and D only
- (3) A, C and D only
- (4) A, B, C and D

()

4) Study the classification chart below.



Plant A

In which group, W, X, Y or Z, should plant A be classified?

- (1) W
- (2) X
- (3) Y
- (4) Z

()

5) Study the following table carefully.

| Group A | Group B |
|--------------|----------|
| Water bottle | Penguin |
| Pencil box | Hamster |
| Train | Tiger |
| P | Q |

Which of the following could P and Q be?

| | P | Q |
|----|------------|---------|
| 1) | Toad | Paper |
| 2) | Marker | Pigeon |
| 3) | Dragonfly | Giraffe |
| 4) | Dictionary | Feather |

()

6) Devi observed the object shown below for a month. Observed the object shown below for a month. She recorded the following observations.



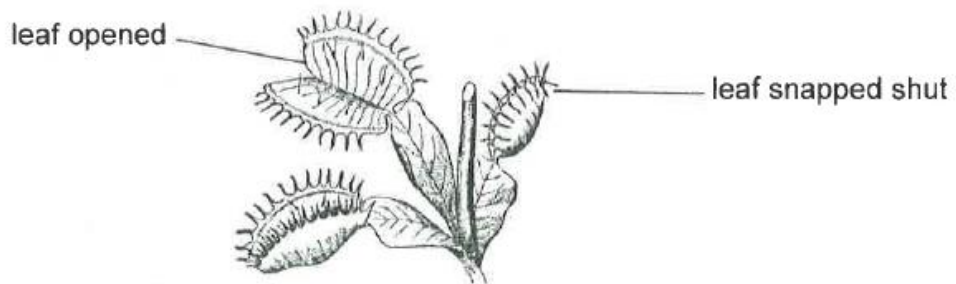
- A It has no flowers
- B It does not need water.
- C It does not grow taller or bigger.
- D It has large heart-shaped leaves.

Which observation help Devi to conclude that the object is a **non-living thing**?

- (1) A and D only
- (2) B and C only
- (3) A and B only
- (4) C and D only

()

- 7) The diagram below shows a plant growing in the garden. The leaves of the plant snapped shut when touched.

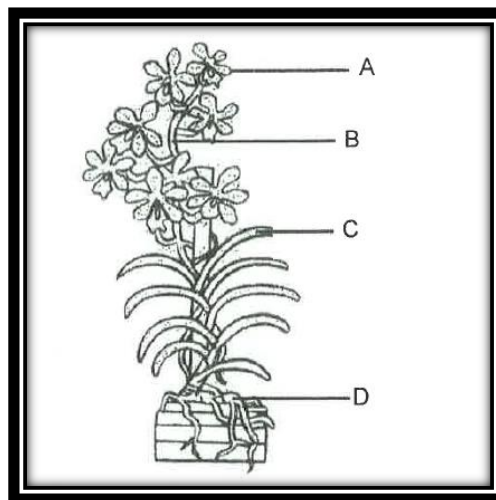


Which characteristics of living things does the plant show?

- (1) Living things can grow.
- (2) Living things can reproduce.
- (3) Living things respond to changes.
- (4) Living things need air, water and food to survive.

()

- 8) Look at the plant given below carefully.

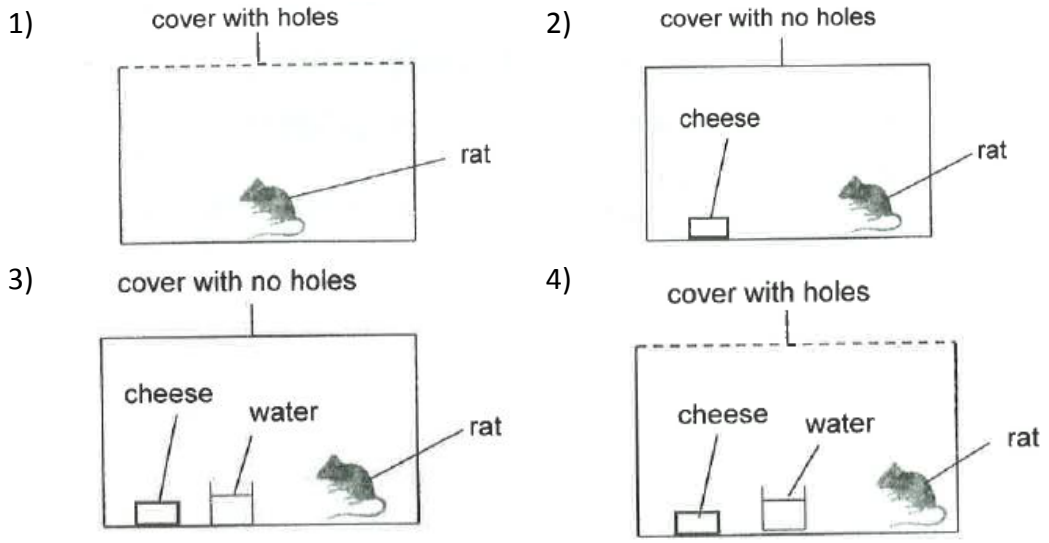


A, B, C and D represent different parts of the plant. Which of the following correctly represents the parts marked A to D?

| | A | B | C | D |
|-----|----------|----------|----------|----------|
| (1) | Leaf | Flower | Roots | Stem |
| (2) | Roots | Stem | Leaf | Flower |
| (3) | Flower | Leaf | Stem | Roots |
| (4) | Flower | Stem | Leaf | Roots |

()

9) Jamal set up an experiment as shown below. He placed a rat in each of the four similar containers. In which one of the containers, would the rat be alive for the longest period of time?

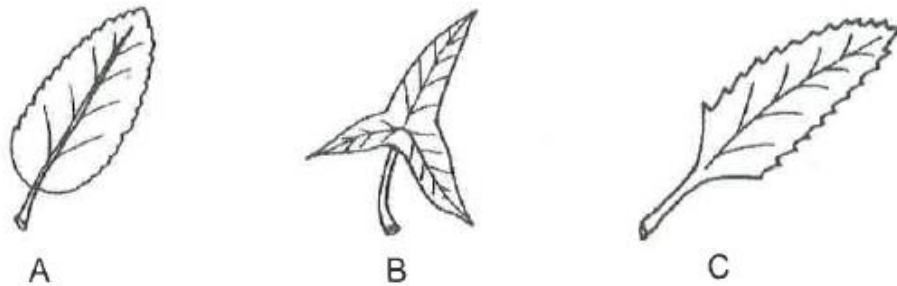


()

10) Look at the two leaves below.



Which of the following leaves, A, B or C, can be classified in the same group as the two leaves above?

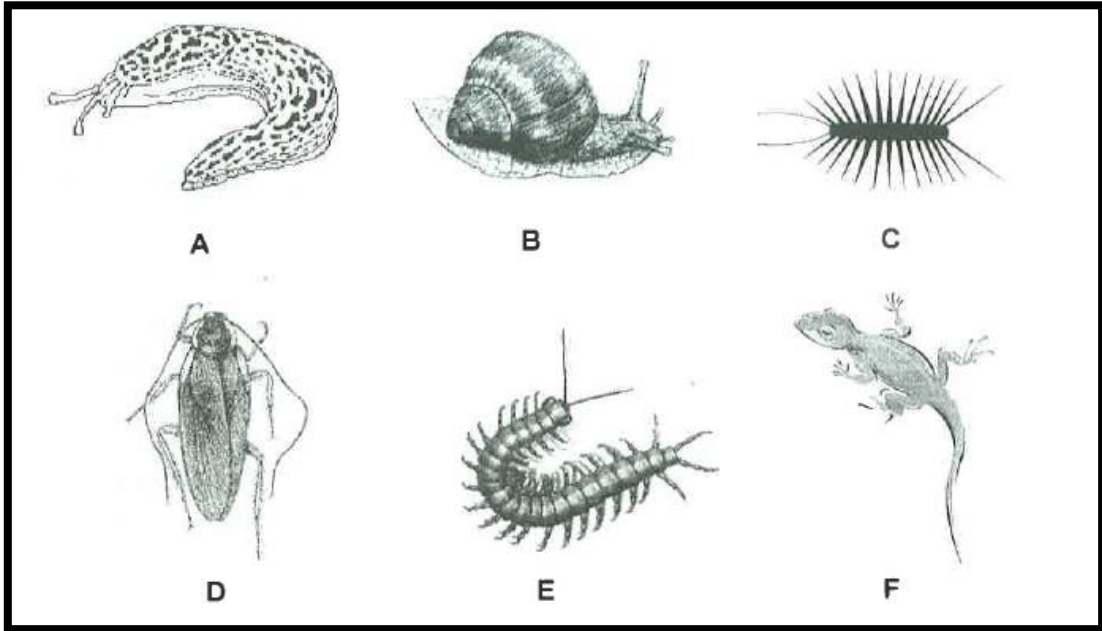


- (1) A and B only
- (2) A and C only
- (3) B and C only
- (4) A, B and C

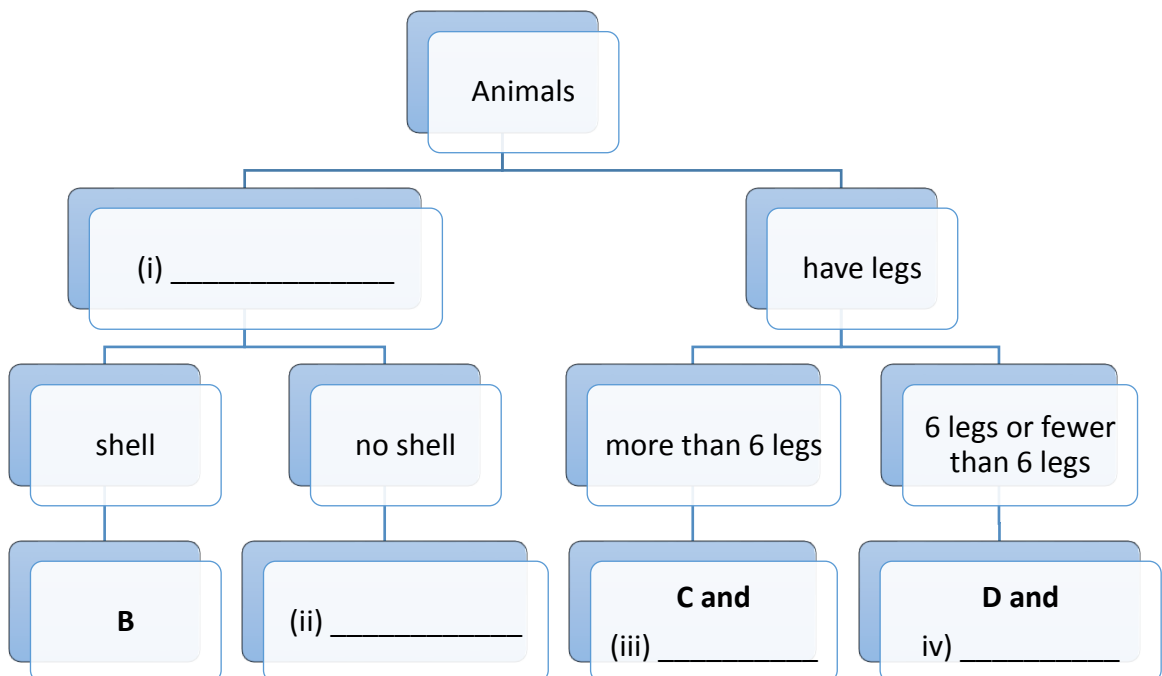
()

Section B : Open-ended questions (10 marks)

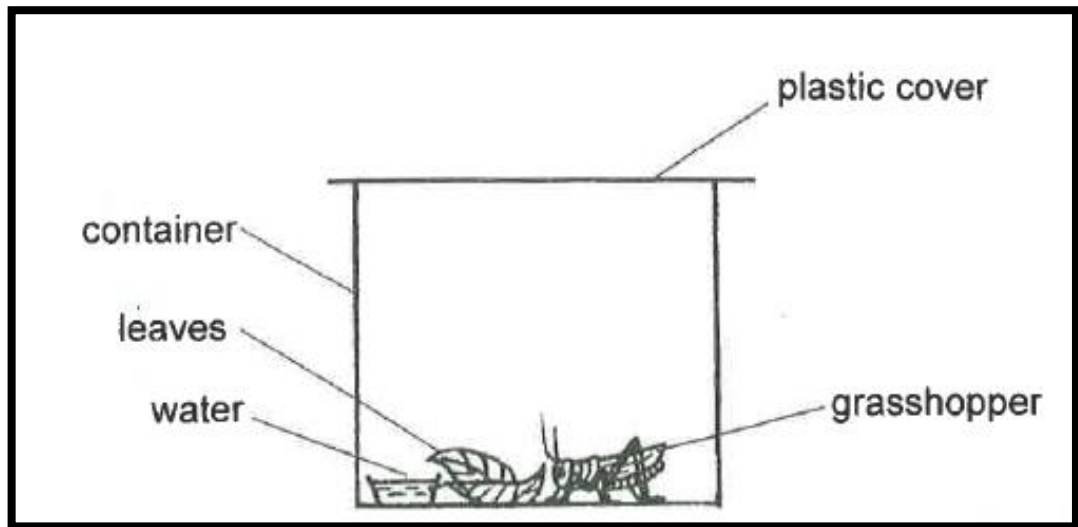
11. Study the animals shown below.



Complete the classification chart below by filling up the empty boxes (i), (ii), (iii) and (iv). (2m)



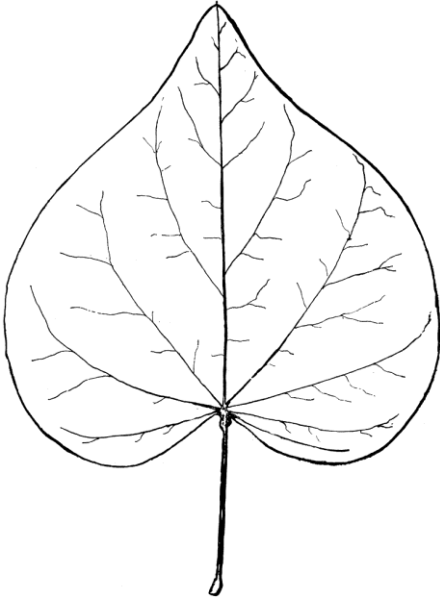
- 12 David found a grasshopper in the park. He kept it in a container with some leaves and water. To prevent the grasshopper from escaping, he covered the container with a plastic cover tightly.



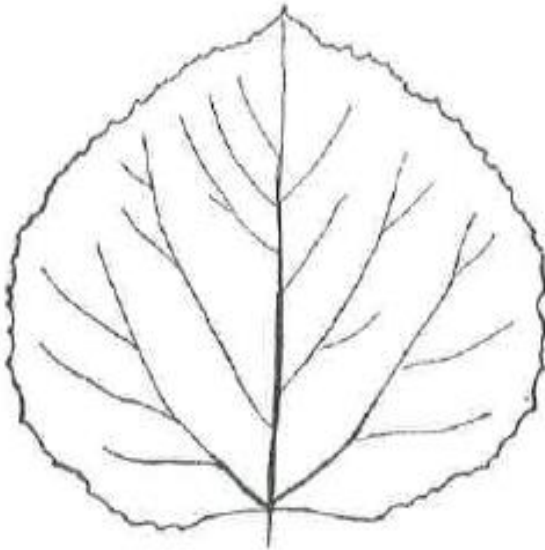
- (a) What happened to the grasshopper ten days later? (1m)

- (b) Explain your answer in part (a). (1m)

13 Jacob found two leaves in the garden.



Leaf A



Leaf B

Based on what you observe from the pictures only, state one similarity and one difference between leaf A and leaf B. (Do not compare size)

Similarity:

(1m)

Difference:

(1m)

Answers:

- | | | | | |
|------|------|------|------|-------|
| 1) 4 | 2) 3 | 3) 3 | 4) 2 | 5) 2 |
| 6) 2 | 7) 3 | 8) 4 | 9) 4 | 10) 2 |

- 11) (i) Have no legs
(ii) A
(iii) E
(iv) F

- 12 a) The grasshopper will die?
b) The grasshopper can die because there is no air.

- 13) Similarity: Leaf A and B are heart shaped
Differences: Leaf A does not have a jagged edge but leaf B does.